

IoT business tool to increase efficiency of underground and surface mining operations



Accelerate performance

- Measures remote mining operations (excavation, loading/unloading, transportation) offering fine-grained visibility of transactions to ensure accurate calculation of KPIs for performance, cost, product quality and safety
- Validates excavation, loading and transportation contract terms and assists the resolution of claims. Calculates contractual and real costs. Supports electronic assignment of orders to operators
- Supervises safety rules and extracts operator profiles
- Supports real-time collection of data, based on human transactions (e.g. geocoded daily check-list filled by operators and field engineers)
- Ensures product quality traceability

IoT technology

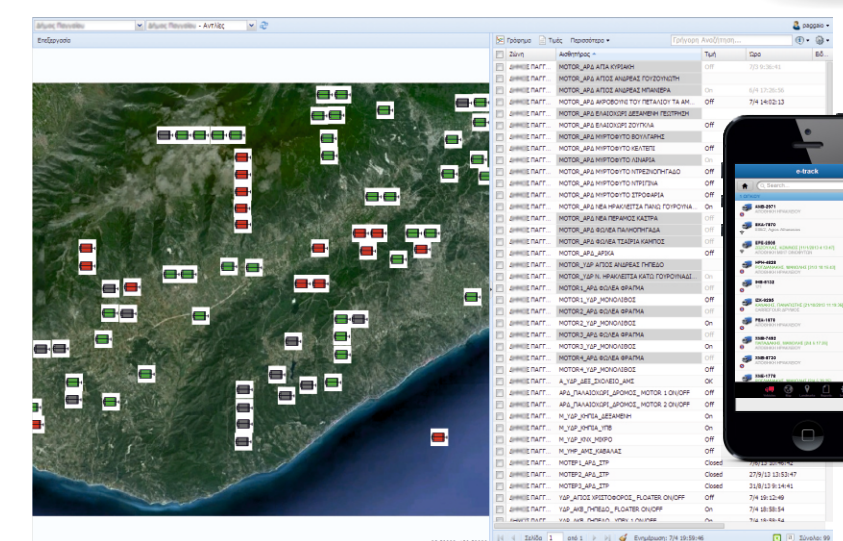
- e-TRACK on-board unit integrating a network of sensors is installed on the equipment (e.g. dozers, loaders, trucks) to automatically acquire real-time operations data
- Sensor data is filtered and aggregated to a higher level of abstraction to supervise and measure field transactions. For example: Trace product quality through automated measurement of loader location in the mine, identification of the loaded truck and of its unloading location
- Mining operations data are used to provide fine-grained cost analysis (fuel, loads, work effort, equipment use and maintenance)
- e-MINING Web/Mobile tools, provide corporate users, being responsible for operational, tactical or strategic decisions, with the appropriate business process visibility and decision-making support

Business Model & Corporate IT Infrastructure

- Contracts
- Cost model
- Operations schedule

Field Operations Sensor Data & Mobile Transactions

- | | |
|----------------------|--------------------|
| Sensor data | Mobile data |
| • Asset localization | • Work assignment |
| • Asset utilization | • Check-list |
| • Energy consumption | |
| • Operator profile | |



KPIs Evaluation

- Production volume versus asset utilisation
- Contractual vs actual cost

Operations Support

- Daily schedules deviation
- Dispatch new job assignment
- Report on exceptions

Notifications

- Wrong unloading procedure with product quality impact
- Unsafe process conditions