



Innovation in Vessel Efficiency

Accurate data monitoring supports vessel efficiency and reduces environmental impact



Accelerate performance

Reliable web based onshore and on board software applications promote awareness, monitor key performance indicators and improve energy efficiency.

Main targets are:

- Consumption measurement and correlation with produced power
- Evaluation of Vessel performance via introduction of key performance indicators
- Vessel's monitoring (M/E & D/G operational conditions, AMS and more)

Real time visibility of your business processes

Vessel model

- Sea trials results
- Main engine and generators shop tests results
- Vessel operations schedule

Field operations data

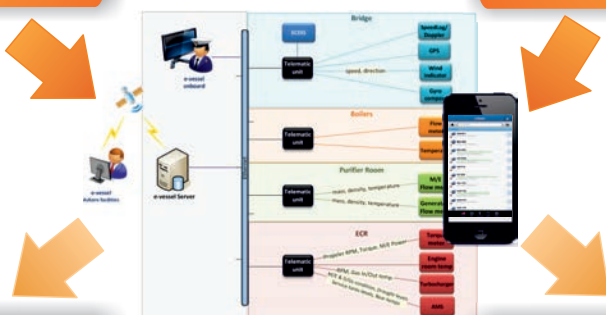
- M/E condition
- D/Gs condition
- Fuel oil consumption
- Torque meter
- Bridge
- Noon reports

KPIs Evaluation

- Deviation from shop tests (%)
- SFOC, measured vs theoretical
- Efficient use of Generators (load sharing)
- Slip increase trend line
- Speed loss vs sea trials
- It is powered by Hydrus Group

Operations Support

- Robust and user friendly web user interface
- Automatic report generation
- Notifications

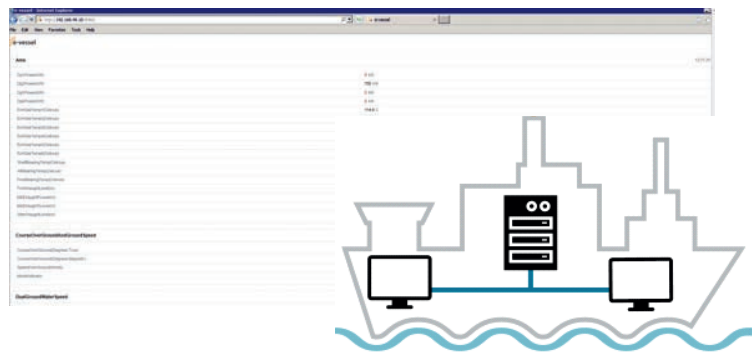


Robust automated and continuous data assessment

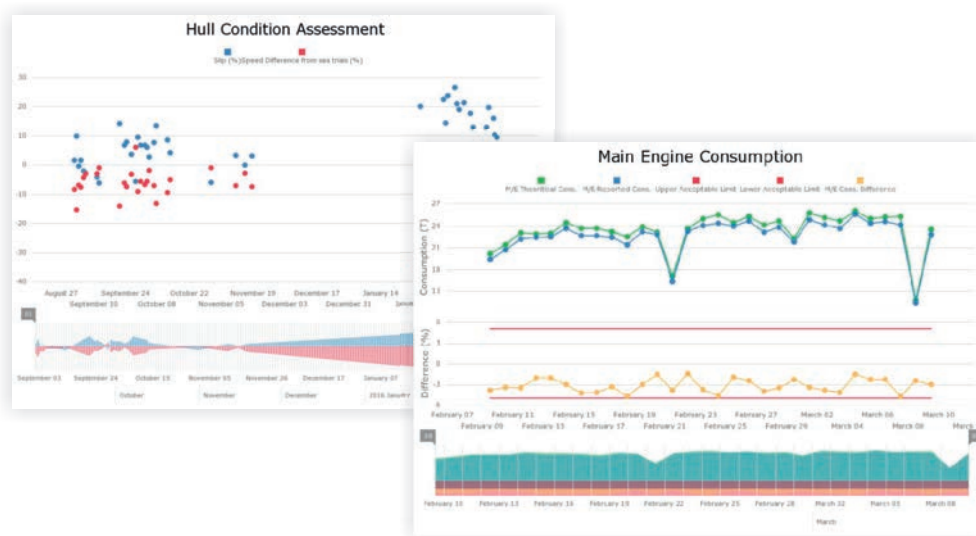
- Sealed data acquisition system monitors vessel activity and fuel consumption
- Sensors data integrity, validation & overall consistency checks
- Use of existing satellite data connection to automatically and efficiently send measurements to the cloud or ashore

Available versions:

- e-vessel basic: measurements are entered manually by the crew in correspondence with the noon reports. Entire performance monitoring functionality is available.
- e-vessel online: Enables shipping company ashore to optimize fleet efficiency
- e-vessel onboard: Enables vessel operators to optimize vessel efficiency



Using thermodynamic and statistical models as well as naval architecture methods, the efficiency of the propulsion, the electric generating plant, the steam generating plant and the hull is continuously calculated and compared to the past, giving to the operator accurate data in order to decide on preventive or corrective actions.



e-vessel, developed by telematics and marine engineering experts, aims to be a both technically and commercially oriented system that will assist the Shipping companies to manage their fleets efficiently.

Performance monitoring is powered by Hydrus Group.

**SOLUTION
PARTNER**

Emphasis Telematics is an M2M partner of Deutsche Telekom AG and provides global solutions in mining and industrial production, logistics, and maritime transportation.



Emphasis Telematics SA

Mesogion Ave 123 & Krimeas1

115 26 Athens, Greece

Tel: +30 210 6923100, Fax: +30 210 6923120

www.emphasisnet.gr

email: info@emphasisnet.gr