

Quality & Reliability for Cold Chain Management

Your choice to:

Maintain goods quality
Protect your company's image & brand
Manage cost

Solution integrated components

e-METER system
e-TRACK system platform
Sensors
Web based applications
Telecommunications

Keeping extraordinary quality standards in storage and transportation of sensitive goods is crucial for companies acting in the cold or sensitive foods industry. e-METER and e-TRACK telematic solutions, are offering unique management capabilities of the cold chain. The use of Emphasis Telematics Solutions allows corporations to maintain the required quality of their products during the whole supply chain, to protect their company image and to effectively manage costs.

e-METER is a telemetering system used in tracing and monitoring of HACCP production, storage and transportation conditions. It efficiently manage unexpected situations (or events).

The system consists of:

the **sensors**, measuring the conditions

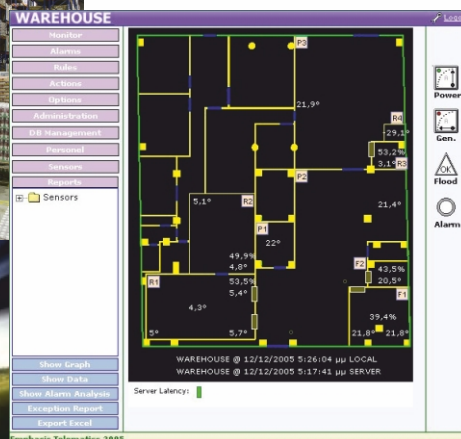
the **telemeter units**, the information from storage and transportation, cooling equipment functionality and business requirements (or business data), and

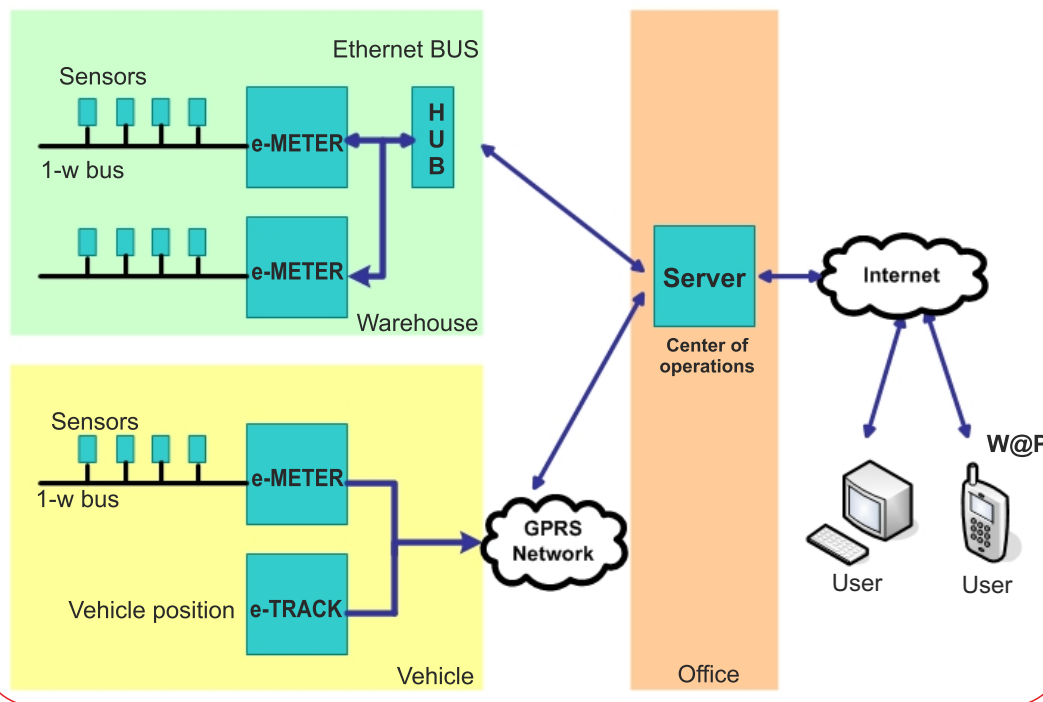
the **Base Station** where central management is executed and alarms are sent, in cases of emergency.

The telemeter units function according to EN12830 standards, can be configured and connected to local Ethernet network in warehouses and other premises.

e-METER sensors, placed in cold storage compartments, and connected to telemeter units through 1-W BUS unique technology, trace the temperature, the humidity, the doors opening, the water or other liquid existence, the power supply and the generator functionality. Telemeter units submit, through local Ethernet network, the information to the Base Station. Administrators monitor the status of the warehouse, by using a simple browser (intranet/internet), or their WAP cell phones. The same functionality of e-METER sensors is used in trucks with goods freezing capability. Sensors trace the temperature and door openings, and notify the driver in case the temperature fluctuations are not within the limits set. The Base Station receives the information via the GPRS network.

The Base Station processes the information, produces status reports for all cold compartments (fixed & mobile) in a schematic representation, and sends alarms (e-mail, SMS, calls to cell phones) in cases of emergency.





The e-TRACK system complements the e-METER system providing complete Cold Chain coverage

e-TRACK, is a unique fleet tracking system, wholly developed by Emphasis Telematics, to fulfil tracking and monitoring needs met in the industries of sensitive or cold goods.

The system combines sensors, hardware, firmware and software, and is made up of the following components:

The **Vehicle Unit**, an electronic device which continuously records the position of the vehicle and other data. A satellite tracking system GPS (Global Positioning System) determines the location of each vehicle, while on the road.

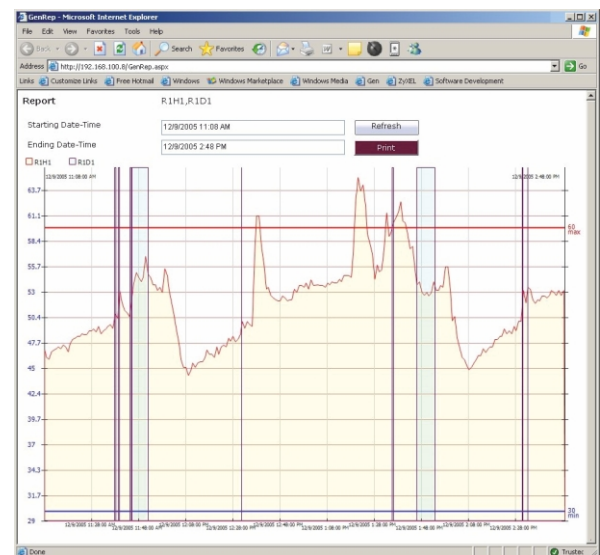
Telecommunications using the GPRS Network, through which the real time updating of the company's vehicles and their respecting locations is achieved.

The **Base Station** which constitutes the administrative center of the fleet. All the necessary information is received on the Base Station either via direct communication with the vehicles or via Internet with connection through the e-TRACK Server.

Professional Support Services

Emphasis Telematics complements its solutions with a full range of Professional Support Services in order to help its customers to smoothly run the systems, applications and equipment have been deployed and are crucial in day-to-day business.

- Consulting and training
- System and Solution support per call or on SLA basis
- Remote technical support for the vehicle equipment and the central system
- Installation, reinstallation and verification of the vehicle equipment and the central system
- 24x7 Customer Help Desk



Emphasis Telematics S.A., based in Athens, Greece, was founded in 1995. Its target is to fulfill extraordinary business needs in the areas of Fleet Tracking and Management, Remote Monitoring and Telematics, as well as Supply Chain Execution. The company provides services, to customers worldwide, ranging from consulting through to the design, development, integration and installation of innovative telematic solutions. Its solutions are complemented by first-rate professional support services. Annual turnover growth of 40%, during the last four years, confirms its clear strategy to maintain and further strengthen its position in the Greek market, but also to become a key player abroad. Emphasis Telematics, holding the leading position in the area of its expertise in the Greek market, is being very active in promoting successfully its solutions worldwide, targeting corporate leaders in their respective fields. As of today, it has offered its solutions and services to a client base comprising more than 450 corporate organizations over Greece, Spain, Cyprus, Turkey and Saudi Arabia.



Mesogeion Ave. 123 & 1, Krimaia str., GR-115 26 Athens, Greece
Tel.: +30 210 6923100, Fax: +30 210 6923120
info@emphasisnet.gr, www.emphasisnet.gr